



**ELEKTRO-PLAST**



Enclosures

Hermetic enclosures

Switches and sockets

**Producer of  
Electro Technical  
Products**



Made in Poland



## ELEKTRO-PLAST

### **ELEKTRO-PLAST Nasielsk**

Is one of the largest companies in Poland specializing in the production of electrical installation equipment. The company has been operating on the electrotechnical market since 1983.

- ENCLOSURES
- JUNCTION BOXES
- HERMETIC EQUIPMENT
- SWITCHES AND SOCKETS



**> 35 years**  
**experience**



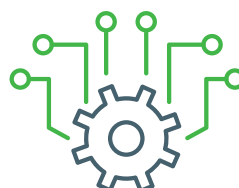
**> 300**  
**professional stores**



**> 2500**  
**products**



**CAD/CAM**  
**studio**



**Modern**  
**machine park**



**> 20 countries**  
**export to over 20 countries**



### HERMETIC EQUIPMENT WASSERDICHTES ZUBEHÖR

- **AQUANT™ IP 65/55**  
is a series of surface-mounted wiring accessories Polish production using 2K injection molding technology.

**IP  
65**



**IP  
55**



### HERMETIC EQUIPMENT WASSERDICHTES ZUBEHÖR

- **HERMES IP44**  
is a series of hermetic surface-mounted equipment.

## Hermetic enclosures IP65



### ENCLOSURES AND POWER EQUIPMENT GEHÄUSE FÜR ELEKTRO ZUBEHÖR

- protection class IP 65  
hermetic
- from 1 to 4 rows
- from 3 to 72 modules
- N+PE terminal bars included
- 2K



### HERMETIC ENCLOSURES GEHÄUSE STRAHLWASSERDICHT

- degree protection IP 65
- protection class II
- 1 to 4 rows
- 12 and 18 mod. in rows
- enclosures 3 to 72 mod.
- 2K



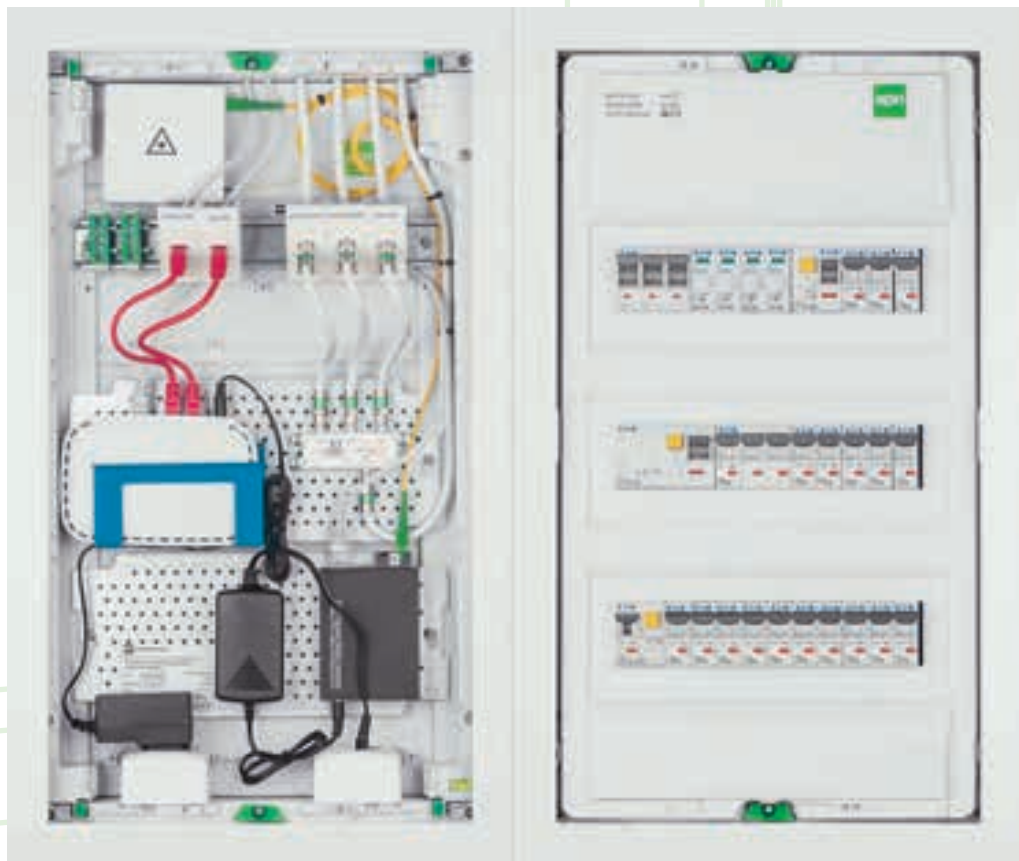


### JUNCTION BOXES AND HERMETIC BOXES ANSCHLUSSDOSEN UND WASSERDICHT BOXEN

#### Supplied:

- IP65
- customized solutions
- top hinged lid
- galvanized steel mounting plate
- key lock.





### MSF™ ENCLOSURES WITH STEEL DOOR GEHÄUSE MIT STAHLTÜREN

- MULTIMEDIA version
- coloured sections PE + N
- TS rails connected by vertical bars
- key lock option
- optional screwless PE + N terminal



## Metal door enclosures



### MSF™ ENCLOSURES WITH STEEL DOOR GEHAUSE MIT STAHLTÜREN

- 1-5 rows
- 12, 2x12, 3x12, 4x12, 5x12
- protection class II
- protection degree IP 30
- N + PE terminal bars included.





### SOCKETS AND SWITCHES FLUSH MOUNTED SCHALTER UND STECKDOSEN

- **SENTIA**
- premium series
- universal multiple frames
- some screw terminals
- 2xUSB power: 5V
- DC 2.1 A to one USB port



### SOCKETS AND SWITCHES FLUSH MOUNTED SCHALTER UND STECKDOSEN

- **ASTORIA** and **CARLA**
- series dedicated to residential investments
- universal multiple vertical / horizontal frames
- child lock
- quick coupler mechanism





### ENCLOSURES AND POWER EQUIPMENT GEHÄUSE FÜR ELEKTRO ZUBEHÖR

- Power sockets are made of such materials and in such a way as to guarantee the reliability regardless of weather conditions and risks associated with the accidental hit a hard object.
- Cases distribution strength RS have a degree of protection IP 65, and their high rate of impact resistance IK 08 amounting to ensure durability and reliability for many years.
- Many variants of customisations.



### JUNCTION BOXES AND HERMETIC BOXES ANSCHLUSSDOSEN UND WASSERDICHTHE BOXEN

- Junction boxes are characterized by innovative technical solutions, as well as improve the quality and speed of installation. Exhibit high stiffness in its design execution.
- Junction have a new square connecting thus being compatible with boxes from other manufacturers. They are made of halogen-free non-combustible material.

## Residential plastic enclosures IP40

### ECONOMIC ENCLOSURES PREISWERTE GEHAUSE

- 1 to 3 rows
- degree of protection IP 40
- rated voltage 400V
- doors in 2 colors
- 6, 8, 12, 24, 36 - mod.

### ELEGANT ENCLOSURES ELEGANTE GEHAUSE

- 5- to 54-module
- 1-, 2- or 3 rows  
(12 modules in a row,  
1 rows also 5, 8  
and 18 modules in a row)
- II insulation class
- IP40 protection
- white door in housing color
- braces system  
for removable DIN rails
- green handles
- PE + N terminals as standard



## Switches and sockets surface mounting



### SWITCHES AND SOCKETS ABGESCHIRMTES ZUBEHÖR

- **BERG**
- surface mounting
- compact size





**ELEKTRO-PLAST**

Producer of Electro Technical Products

**ELEKTRO-PLAST**  
**TADEUSZ CZACHOROWSKI SP. J.**  
POLAND

05-190 Nasielsk, ul. Płońska 18

tel. +48 (23) 693 39 00

fax +48 (23) 693 39 02

[elektro-plast.com.pl](http://elektro-plast.com.pl) [info@elektro-plast.com.pl](mailto:info@elektro-plast.com.pl)

